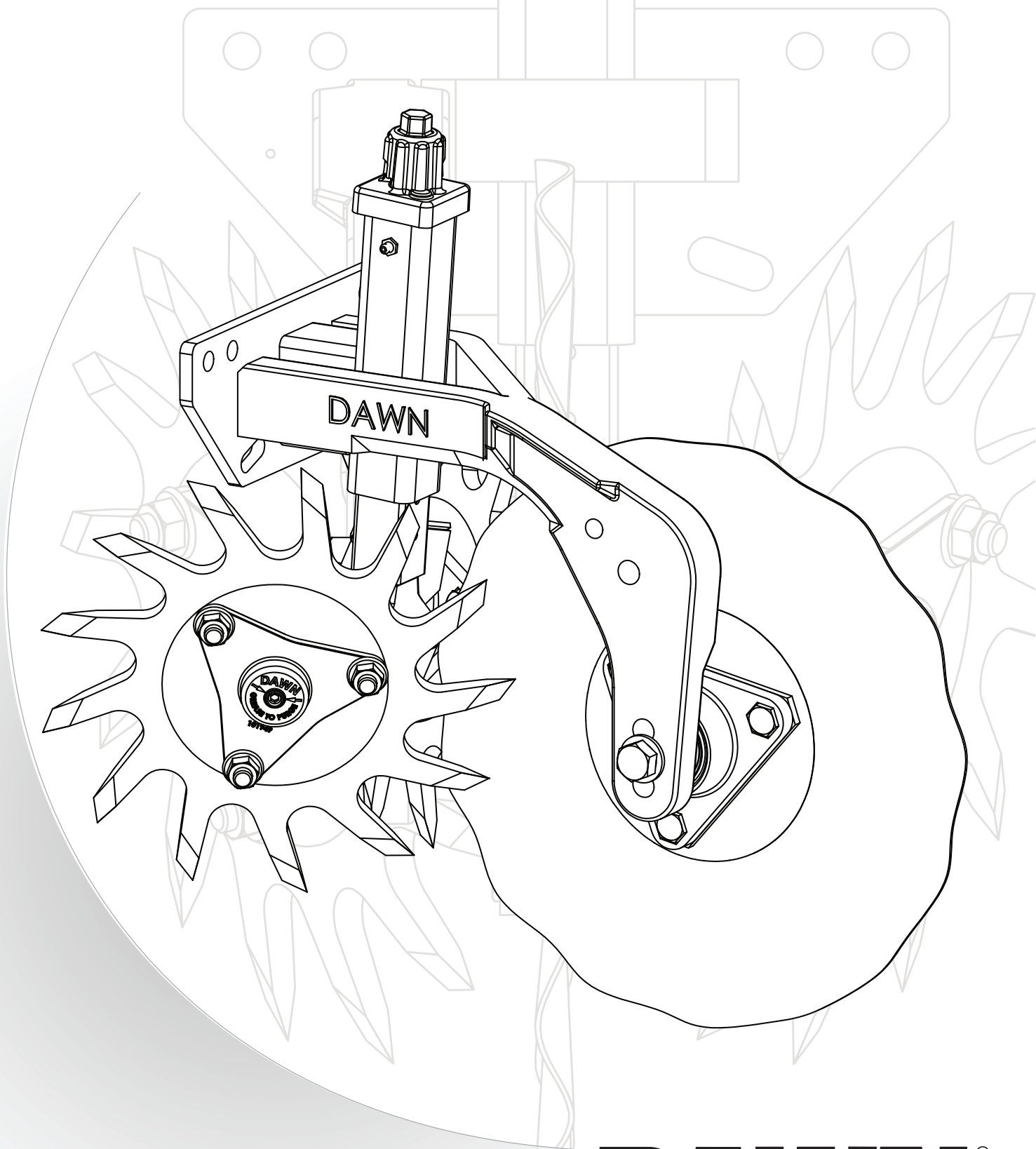


Dawn Model 1572 & 2003 Trashwheel/Coulter Combination Assembly and Operation Manual



DAWN[®]

Introduction

PLEASE CAREFULLY READ THIS MANUAL

It is strongly recommended that you become familiar with all operation and maintenance procedures of your Dawn agricultural equipment.

Failure to follow safety recommendations while this implement is in operation, and/or failure to properly store this implement, and/or failure to adequately prepare this implement for transport, could result in equipment damage, personal injury or death. Please make yourself aware of all federal and local laws that may apply to the transport, use and sale of this implement.

USING THIS MANUAL

All Dawn manuals are named and numbered and should be considered a principal element of the device they accompany. Please ensure this manual is kept in a location not subject to extreme conditions (i.e. excess humidity, hydraulic fluid, exposed to natural elements, etc.). Please ensure that this manual remains with the implement if traded, leased or sold.

WARRANTY INFORMATION

All new Dawn Equipment Company products carry a limited warranty. Warranty assurances vary by device, and can be found in the appendices of this or any other Dawn Equipment Company Users Manual. Warranty information is also available upon request by contacting Dawn toll-free at 800.554.0007, or you can request a copy in writing. Request warranty information by e-mail at info@dawnequipment.com, or by US Post at Dawn Equipment Company, PO Box 497, Sycamore IL 60178.

Dawn Equipment Company prides itself on the manufacture of quality American made row crop tools. Warranties will be honored by Dawn to dealers authorized to sell Dawn Equipment products who, in turn, honor such warranties to the original retail purchaser. Should this equipment be improperly cared for, or should it be modified to change performance beyond OEM specifications, applicable Dawn warranties will become void, and Dawn sponsored implement improvements will not be granted.

DISCLAIMER

Dawn Equipment Company makes no claim to the safety or reliability of non Dawn OEM parts or whole goods used in conjunction with Dawn OEM equipment, and shall not be held responsible for any personal injury or property damage, or for any complications with operational performance caused by non Dawn OEM parts or whole goods. Please familiarize yourself with the users manuals and safety recommendations of all non Dawn OEM equipment.

WEIGHTS AND MEASURES

All Dawn Equipment Company part and whole good designs adhere to the United States Customary Unit System (Inch-Pound). All measurements in this manual are labeled using only the aforementioned units, unless otherwise explicitly specified.

ADDITIONAL INFORMATION

Additional information on this, and any other Dawn tool can be found on the web at www.dawnequipment.com. You may also contact Dawn for information by phone at 800.554.0007, by fax at 815.899.3663, or by e-mail at info@dawnequipment.com.



Table of Contents

Safety	4
General Safety Information.....	
Safety Triggers.....	
Reporting an Emergency.....	
Maintenance and Upkeep.....	
Proper Waste Disposal.....	
Safety Gear.....	
Protective Clothing.....	
First Aid Kit and Recommended Contents.....	
Trashwheel Assembly	6
Installation.....	
Setup & Operation	8
Frame Height.....	
Frame Level.....	
Screw Adjustments.....	
Appendix A: Warranty	9
Appendix B: Quick Reference Assembly Guide	10



Safety Information

GENERAL SAFETY

It is essential that you be able to recognize safety signal words and their associated symbols. Please be alert to any signs posted on your Dawn Equipment Company products, and/or in your users manual. Make sure you have read all safety messages and that you clearly understand the recommended precautions. If you have questions about any Dawn safety sign, or have further questions about safety recommendations on this or any other Dawn product, please contact us at 800.554.0007.

SAFETY TRIGGERS

Several safety symbols appear with their associated safety words throughout your Dawn Equipment user manual. It is important to recognize and understand these safety signals in order to take appropriate action as necessary.

▲ DANGER - Indicates an imminently hazardous situation that, if not avoided, will result in serious injury or death, and/or property damage.

▲ WARNING - Indicates a potentially hazardous situation that, if not avoided, will result in serious injury or death, and/or property damage.

▲ CAUTION - Indicates a potentially hazardous situation that, if not avoided, may result in minor or moderate injury, and/or property damage.

REPORTING AN EMERGENCY

Ensure that you have access to a radio or mobile phone when operating or repairing farm machinery. Working with a partner whenever possible significantly increases the chances of receiving timely emergency care should one party become severely injured, and/or incapacitated.

MAINTENANCE AND UPKEEP

For safety reasons, it is important to keep your implements in proper working order. Unauthorized modifications to Dawn Equipment Company products may compromise the efficiency and/or safe operation of the product and will void any and all warranties through Dawn Equipment Company. Please read your manual before attempting any repair work to your Dawn tool. If you need to work on your Dawn tool, make sure to support it before partially or fully removing it from the attachment points. Do not adjust your Dawn tools while they are moving. Before making adjustments to your Dawn fx tool, make sure to disengage the hydraulic circuit and disconnect the power source.

PROPER WASTE DISPOSAL

Please familiarize yourself with all waste disposal laws applicable to your area before dumping.



Safety Gear

PROTECTIVE CLOTHING

Wearing proper attire when working on agricultural equipment is a critical safety precaution. Loose clothing or accessories may become entangled in moving parts causing serious injury or death. Please ensure that loose cuffs, shirts, belts, jewelry, etc. are secured such that they cannot be drawn into moving machinery. Stay aware of your surroundings when in the proximity of machinery that is either moving or has the potential for spontaneous movement. Equip yourself with all recommended safety accessories, and develop a strategy for ensuring their use when needed.

Safety Glasses / Goggles

If you will be using hazardous chemicals, or are striking, cutting or grinding metal make sure you are wearing eye protection

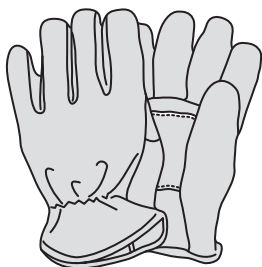
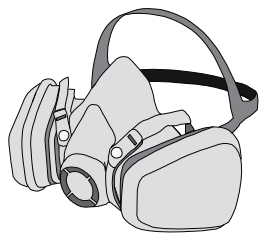


Earplugs / Sound Muffers

When working around equipment that generates high amplitude sound (ie dryers, vaccums, etc.), ear protection is strongly recommended.

Respirator Mask

Please carefully read all safety information associated with any chemicals you will be handling. Use a respirator mask when using hazardous chemicals, (ie Insecticides, HN3, etc.)



Work Gloves

If working around machinery with sharp edges, or rough metal surfaces, work gloves may prevent a few stitches. Work gloves are inexpensive, and are really worth the investment.

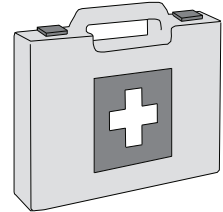


Steel-Toed Boots

A good pair of steel-toed boots can save your toes. Avoid an unfortunate accident, and protect your feet

First Aid Kit

In order to minimize the risk of infection, every shop and tractor should have a complete first aid kit.



First Aid Kit Contents

According to the National Agricultural Safety Database (NASD) and Canadian Agricultural Safety Association (CASA), each first aid kit should include the following;

General Supplies:

- Poison First Aid Kit with syrup of Ipecac and charcoal
- Sterile first aid dressings in sealed envelope (2"x2" for small wounds, 4"x4" for larger wounds and for compress to stop bleeding)
- Tongue blades
- Stainless steel bandage scissors (strong enough to cut denim)
- Tweezers
- Eye wash solution
- Thermometer
- Safety pins
- Ace bandage
- "Band-aids"
- Roller bandage 1"x 5 yds. (for finger)
- Roller bandage 2"x 5 yds. to hold dressings in place
- Adhesive tape
- Triangular bandages for a sling or as a covering over a larger dressing
- Cotton balls for cleaning wounds or applying medication
- Splints 1/4" thick. 1/2" wide, 12-15" long for splinting broken arms and legs
- 70% isopropyl alcohol and tincture green soap in a covered container for cleaning
- Ice packs (chemical ice bags) to use to reduce swelling
- Several pairs of disposable latex or nitrile gloves
- Waterless hand wash
- emergency tourniquet (or elastic wrap/tubing)
- Cold pack
- Amputation preservation kit consisting of plastic bags: one large garbage bag, four kitchen-sized and two bread bags.



INSTALLATION

TRASHWHEEL ASSEMBLY

For this assembly you will need;

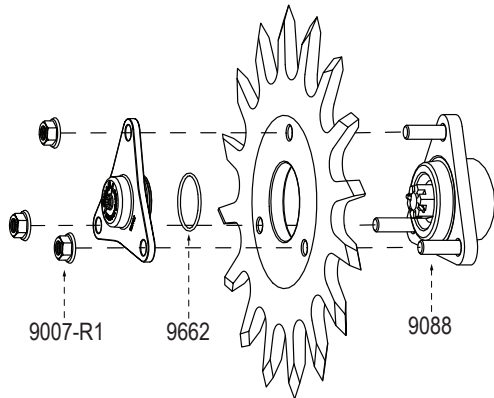
- One (1) 3/4 SAE socket
- One (1) 3/16 Allen wrench
- One (1) 15/16 SAE open ended wrench
- One (1) Bench vise

NOTE Make sure you know which Dawn tool you are assembling, the installation procedure differs for each model.

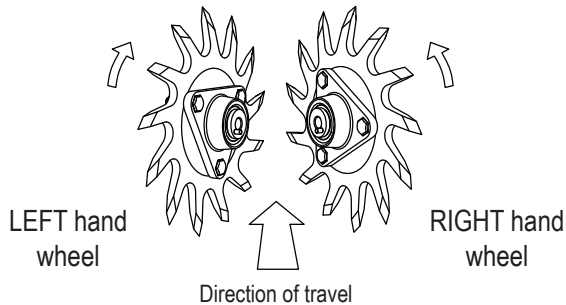
NOTE For some shipments, Trashwheel, hub, and depth band assembly are taken care of in house by Dawn. If your Trashwheels have been shipped already assembled, feel free to skip this step.

1 - Lightly grease O-ring (P/N 9662) and place into groove on the underside of the aluminum Supercap. Do not install pipe plug until the end.

2 - To assemble Trashwheel, insert a 1/2"-13x1.75" HHCS through hub flange, Trashwheel, Supercap, and loosely thread on nut. Repeat for the other two bolts.

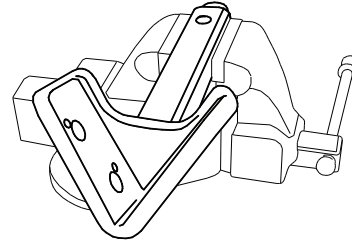


NOTE Trashwheels are directional! They can be assembled as either RIGHT handed or LEFT handed wheels. Assemble and install wheels according to rotational arrows on each wheel indicating the direction of travel.

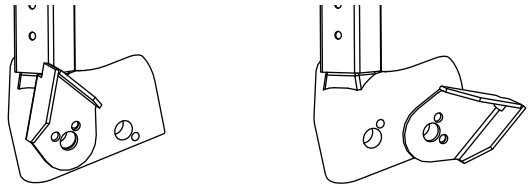


3 - Once Trashwheel assembly is complete, tighten 1/2" flanged lock nuts. At this time you should install the pipe plugs.

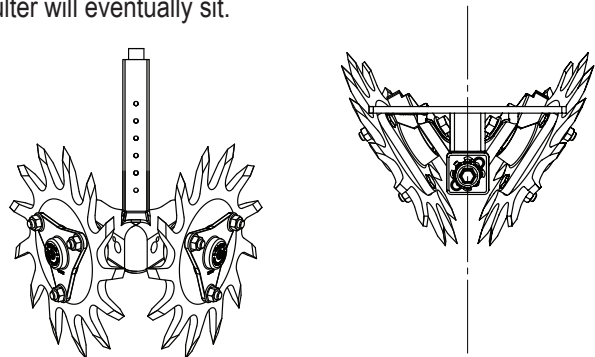
4 - Once you have your Trashwheels assembled, clamp your stem into the vice by its square tube.



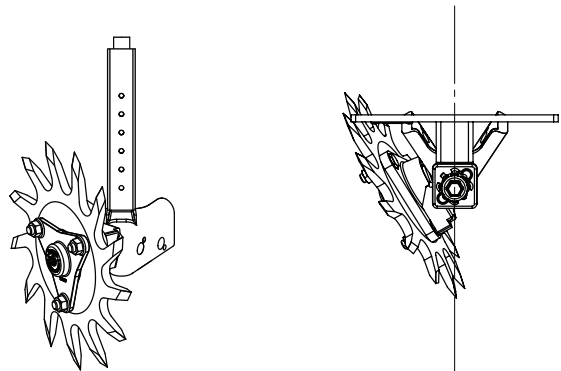
NOTE When installing hub strippers for the forward hole, align the stripper and roll pin so that the stripper points up. For the rear position, align the stripper and roll pin so that the stripper points away from the motion of travel.



5a - For 1572 assembly, install both Trashwheels in the rear hole so that there is a gap along the center line where the coultter will eventually sit.



5b - For 2003 assembly, install the Trashwheel in the leading hole so that it crosses the center line of the stem/row.



INSTALLATION

COULTER BLADE ASSEMBLY

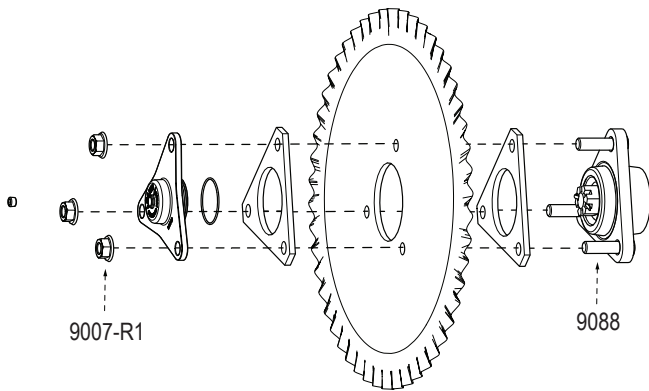
For this installation you will need;

- One (1) 3/4 SAE open ended wrench

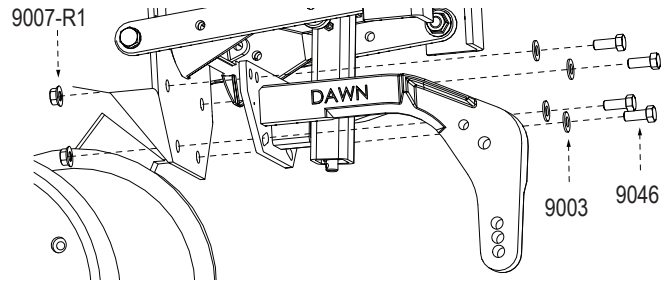
NOTE For some shipments, coulters and hub assembly is taken care of in house by Dawn. If your coulters have been shipped already assembled, feel free to skip this step.

6 - Lightly grease O-ring and place into groove on the underside of the aluminum Supercap. Do not install pipe plug until the end.

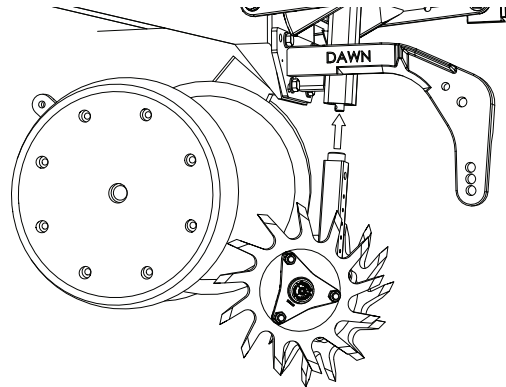
7 - To assemble coulters, insert 1/2-13x1.75" HHCS through hub, 1/4" spacer, coulters blade, another 1/4" spacer, supercap and loosely thread on nut. Repeat for other two bolts. After coulters is assembled, tighten all nuts, fill with grease and insert pipe plug.



8 - Bolt the Trashwheel and coulters mount assembly to the faceplate of your planter row unit.

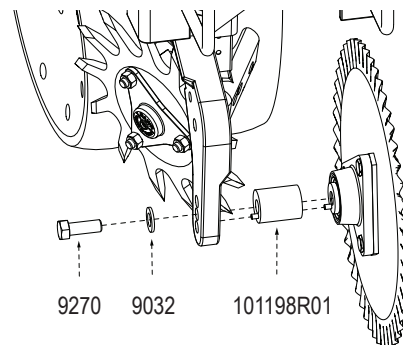


9 - Thread the acme screw in the Trashwheel mount assembly (P/N 200357) into the Trashwheel stem by lifting and turning the Dawn screw-adjust cap until only two dots are visible on the front of the stem.



10a - For the 1572 only, install coulters blade by inserting 5/8-11x1.75" HHCS through washer, coulters arm, and into hub.

10b - For the 2003 only, install coulters blade by insert the 5/8-11x4" HHCS through washer, coulters arm, hub spacer (P/N 101198R01) and into hub.

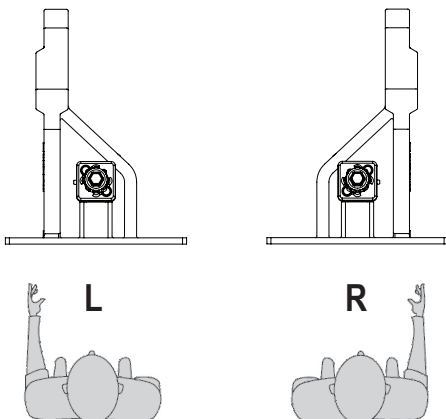


INSTALLING THE MOUNT ASSEMBLY

For this installation you will need;

- Two (2) 3/4" SAE wrenches

NOTE Mount assembly plates are directional! Your order is likely split into half right-handed and half left-handed mounts. Handedness is determined from behind the toolbar facing the motion of travel.



NOTE Coulters depth should never exceed the depth of the seed placement. The middle hole is a good starting point for most platners.

NOTE Kinze planters require the coulters blade to be installed in the BOTTOM hole.

Setup & Operation

SETUP

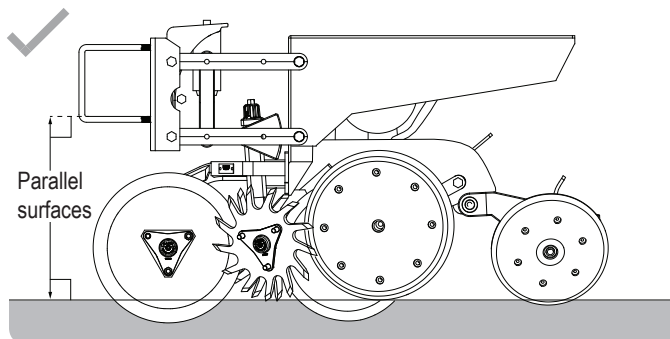
The following section is designed to optimize your Dawn tool and toolbar for operation.

Frame Orientation

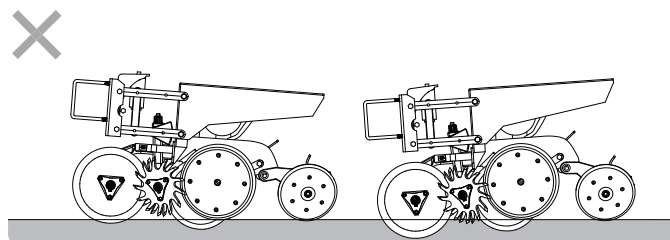
All toolbars are designed to be operated in a square and level orientation in relation to the ground. All Dawn tools are designed with this principle in mind, and will work best on a level toolbar.

Adjusting Frame Orientation

Run your toolbar on flat ground for a short distance (15-20ft) through its intended operating conditions before checking and adjusting the orientation of the toolbar. Visually inspect the toolbar from the end; it should be level with the ground. Do not use a bubble level, instead use the ground as a guide; the goal is to match the row units to the soil profile. After your initial adjustment, run the toolbar through more ground and then stop to double check that your adjustments are correct, repeat the previous steps until proper toolbar orientation is achieved.



Correct orientation of toolbar. Toolbar is level to ground.



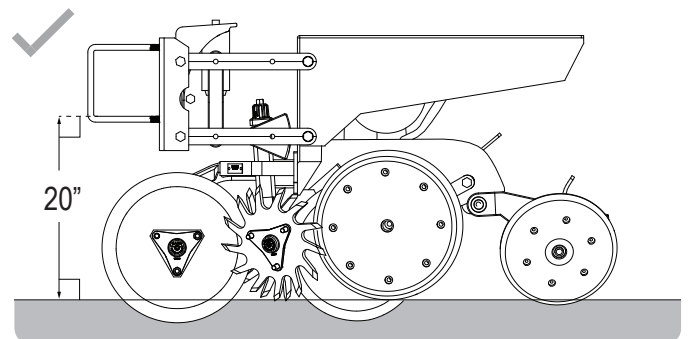
Incorrect orientation of toolbar. Toolbar is not level.

Frame Height

The industry standard toolbar height is designed to be 20" from nominal ground level to the bottom of the toolbar. All Dawn tools are designed with this principle in mind, and will work best when the toolbar is set to this height.

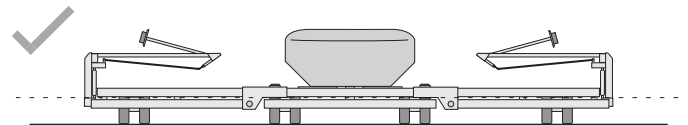
Adjusting Frame Height

Run the toolbar on flat ground for a short distance (15-20ft) in its intended operating conditions before checking and adjusting the height of the toolbar. After your initial adjustment, run the bar through more ground and then stop to double check that your adjustments are correct. Repeat this process until the desired toolbar height is achieved. A small variation of ~1" above or below the standard 20" height is common and should not make too much of a difference in operation.

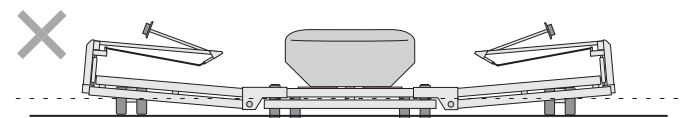


Check toolbar height from ground to bottom of toolbar.

NOTE It is common for central seed fill systems to vary in toolbar height from the center of the planter where there is more weight, to the wings where there is less weight. It is important to adjust the toolbar so that the height from the ground to the bottom of the toolbar is consistent along the entire length of the toolbar. Weights may be required to balance loads.



Correct toolbar height across length of toolbar with central fill system.



Incorrect toolbar height. Central section lower than wing sections.

Appendix A - Warranty

The following warranties with respect to new Dawn Equipment Company ("Dawn") products, excepting as hereafter provided, is made by Dawn to Dealers ("Dealers") authorized by Dawn to sell the products involved and each selling Dealer, in turn, make such warranties to the original retail purchaser (the "Purchaser").

A. Duration and Extent of Warranty

1. Products, except all working, moving and all or any parts subject to wear, except as hereafter provided, which are defective in materials or workmanship as delivered to the Purchaser by a Dealer will be repaired by a Dealer or replaced by Dawn, only, as Dawn elects, without charge for materials or labor, if such defect appears in not more than 12 months, or from and after the date of delivery to the Purchase by the Dealer.
2. Dawn warrants that the Trashwheels planter attachment wheels (Dawn part #s 200015, 101550, 102185M-L, 102185M-R) will not bend or break during its useful lifetime.
3. Liability of Dawn for defective parts or material is specifically limited to the value of the parts or materials, only.
4. All parts or materials requiring warranty work MUST be returned by delivery to the selling Dealer for repair or for delivery to Dawn within thirty (30) days of occurrence of the defect of failure of the part or material, all freight prepaid by the Dealer. Upon completion of the warranty work, dawn will ship parts or material to the Dealer, freight prepaid by Dawn.
5. All decisions by Dawn pertaining to warranty are final.

B. Warranty Exclusions; Dawn will not be responsible for any of the following:

1. Defects or damage resulting from use, repairs or service performed in a manner not approved by Dawn or from repairs or service performed by someone other than an authorized Dawn Dealer service department (after approval from Dawn) or Dawn to repair or replace the product involved.
2. Defects, damage or failure resulting from any alteration or additions done in a manner not approved by Dawn.

3. Defects, damage or failure or depreciation resulting from wear and tear, accident, misuses, negligence, improper maintenance or improper protection and storage.
4. INCIDENTAL OR CONSEQUENTIAL DAMAGES, INCLUDING BUT NOT LIMITED TO, LOSS OF PROFITS, LOSS OF TIME, LOSS OF CROPS, INCONVENIENCE, LOSS OF USE OF THE PRODUCT OR OTHER MACHINERY, EQUIPMENT OR VEHICLE USED WITH THE PRODUCTS, COST OF RENTALS OR REPLACEMENT OF THE PRODUCTS OR OTHER COMMERCIAL LOSS.

C. Remedies Exclusive: NO Other Warranties

The obligations of Dawn and the Dealers are limited to the obligations set forth in this Limited Warranty. THIS LIMITED WARRANTY IS IN LIEU OF ALL OTHER WARRANTIES OF DAWN, AND THE DEALERS, EXPRESSED OR IMPLIED. WARRANTIES BY DAWN OR THE DEALER OF CONDITION QUALITY, MERCHANT ABILITY OR FITNESS FOR A PARTICULAR PURPOSE ARE EXCLUDED, AS ARE ALL OTHER REPRESENTATIONS BY DAWN AND THE DEALERS TO THE PURCHASE OR USER AND ALL OTHER OBLIGATIONS OR LIABILITIES OF DAWN AND THE DEALERS. NO OTHER PERSON IS AUTHORIZED TO GIVE ANY OTHER WARRANTY OR TO ASSUME ANY OTHER LIABILITY ON BEHALF OF DAWN OR THE DEALERS. THIS LIMITED WARRANTY MAY NOT BE TRANSFERRED BY THE PURCHASER TO ANY SUBSEQUENT OWNER.

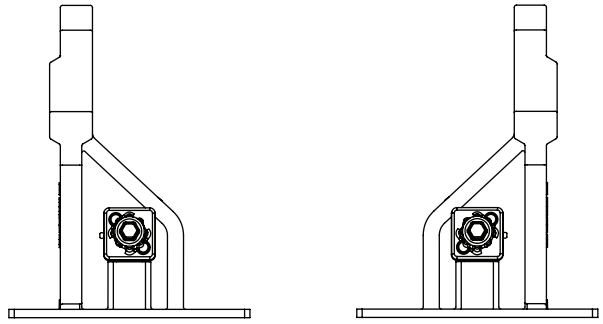
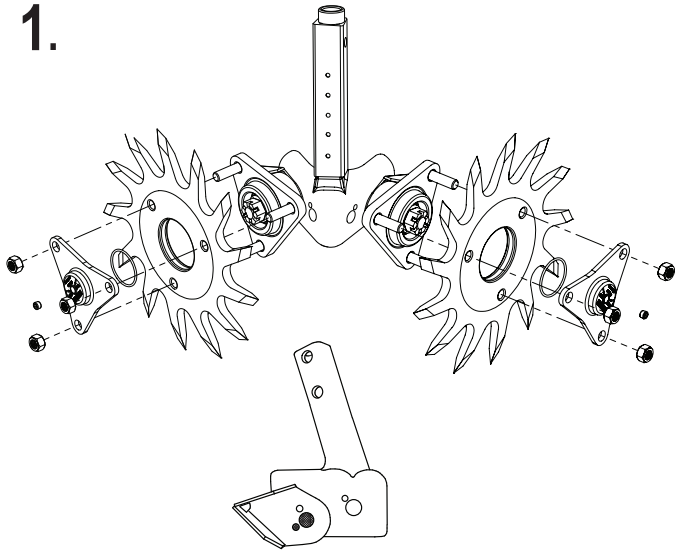
D. The instruction manual supplied with the Product contains important maintenance and service information. Read the manual and follow the recommendations contained herein. Please remember that failures due to improper maintenance or service are not covered by the Limited Warranty.

Dawn Equipment Company reserves the right to make changes in design or specifications at any time without obligation to purchasers or equipment and components previously sold. This warranty shall not be altered or changed in any way.



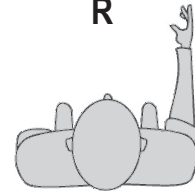
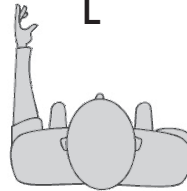
Appendix B - 1572 Quick Reference

1.

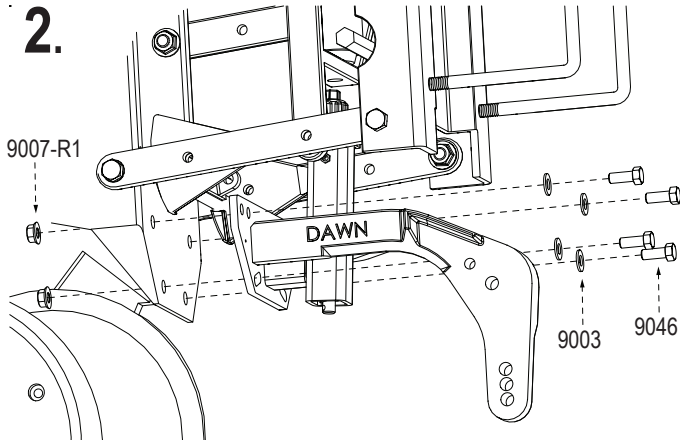


L

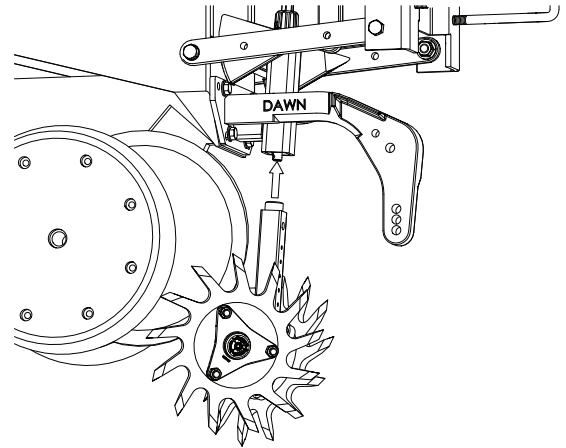
R



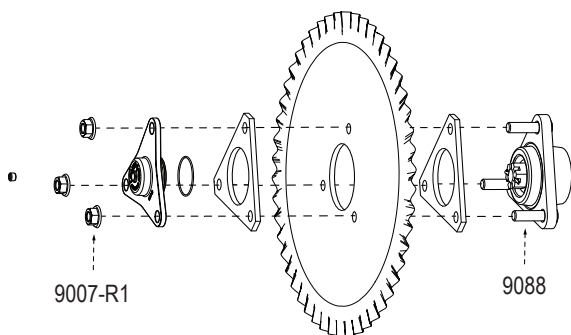
2.



3.



4.



5.

