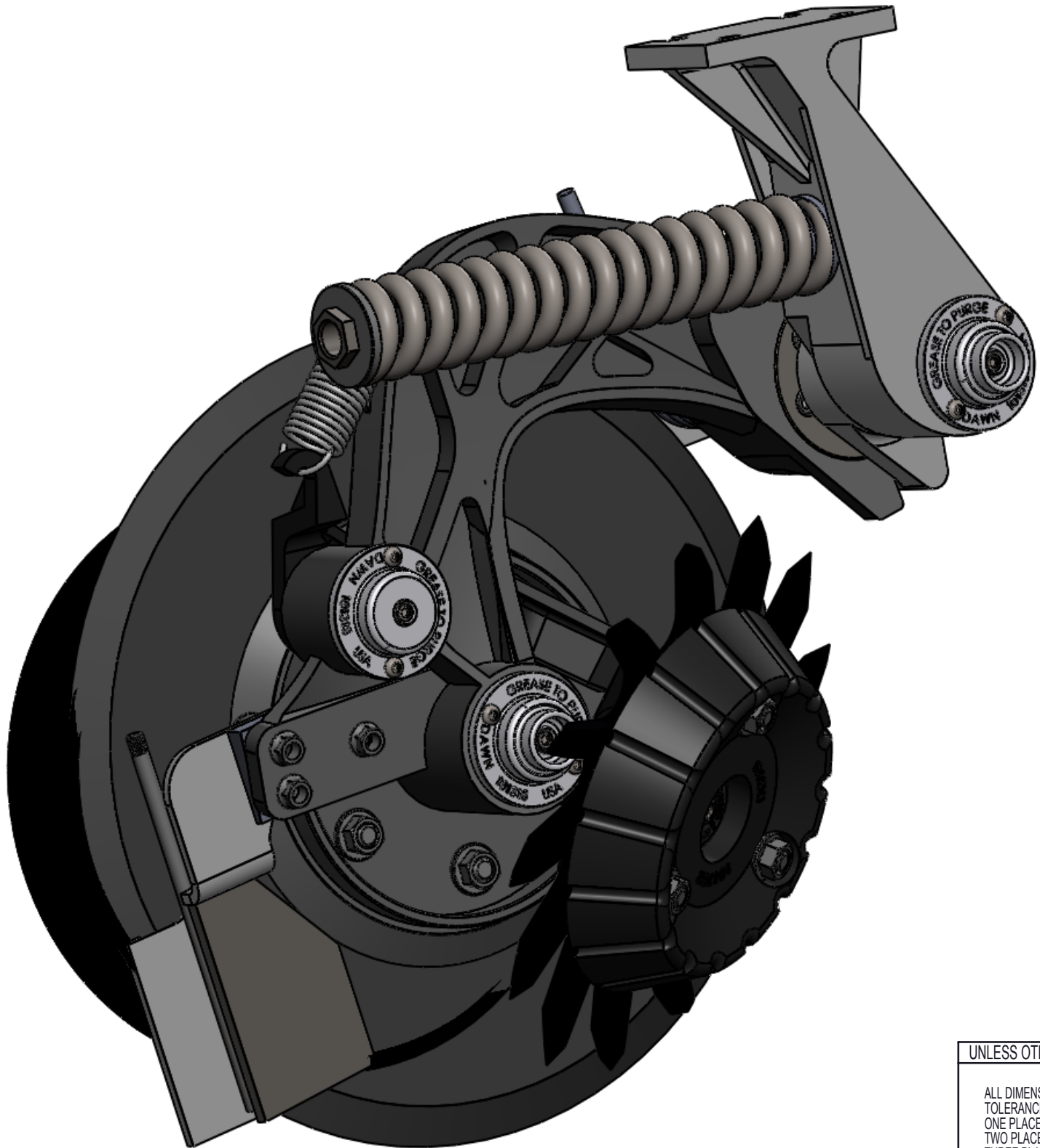

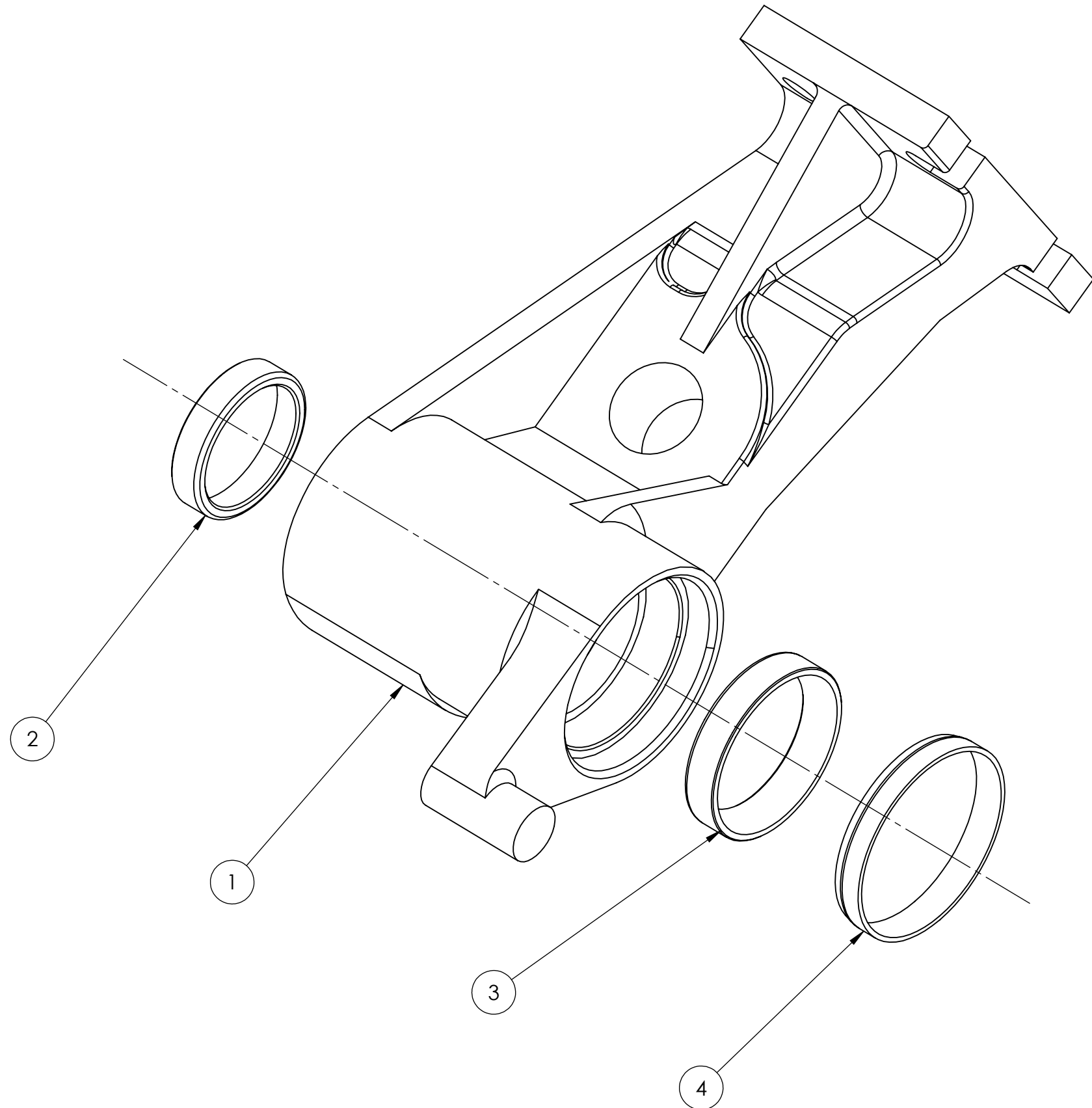


REVISIONS				
REV	DESCRIPTION	ECO	REVISION BY	REVISION DATE



UNLESS OTHERWISE SPECIFIED:  ALL DIMENSIONS ARE IN INCHES TOLERANCES: ONE PLACE DECIMAL= ±.06 TWO PLACE DECIMAL= ±.03 THREE PLACE DECIMAL= ±.015	DRAWN BY:	DATE:	 EQUIPMENT COMPANY BOX 497 SYCAMORE, ILLINOIS 60178 USA	
	CHECKED:	DATE:	TITLE:	
PLEASE NOTE:	APPROVED:	DATE:	DWG. NO.	
THIS DRAWING IS THE PROPERTY OF THE DAWN EQUIPMENT COMPANY AND IS NOT TO BE USED FOR ANY PURPOSE DETRIMENTAL TO ITS INTEREST. ALL DESIGN RIGHTS ARE RESERVED.	MATERIAL: Material <not specified>		SCALE: 1:3	WEIGHT: 88.739





SHOWN: 301320R2 FOR RH  
301321 FOR LH

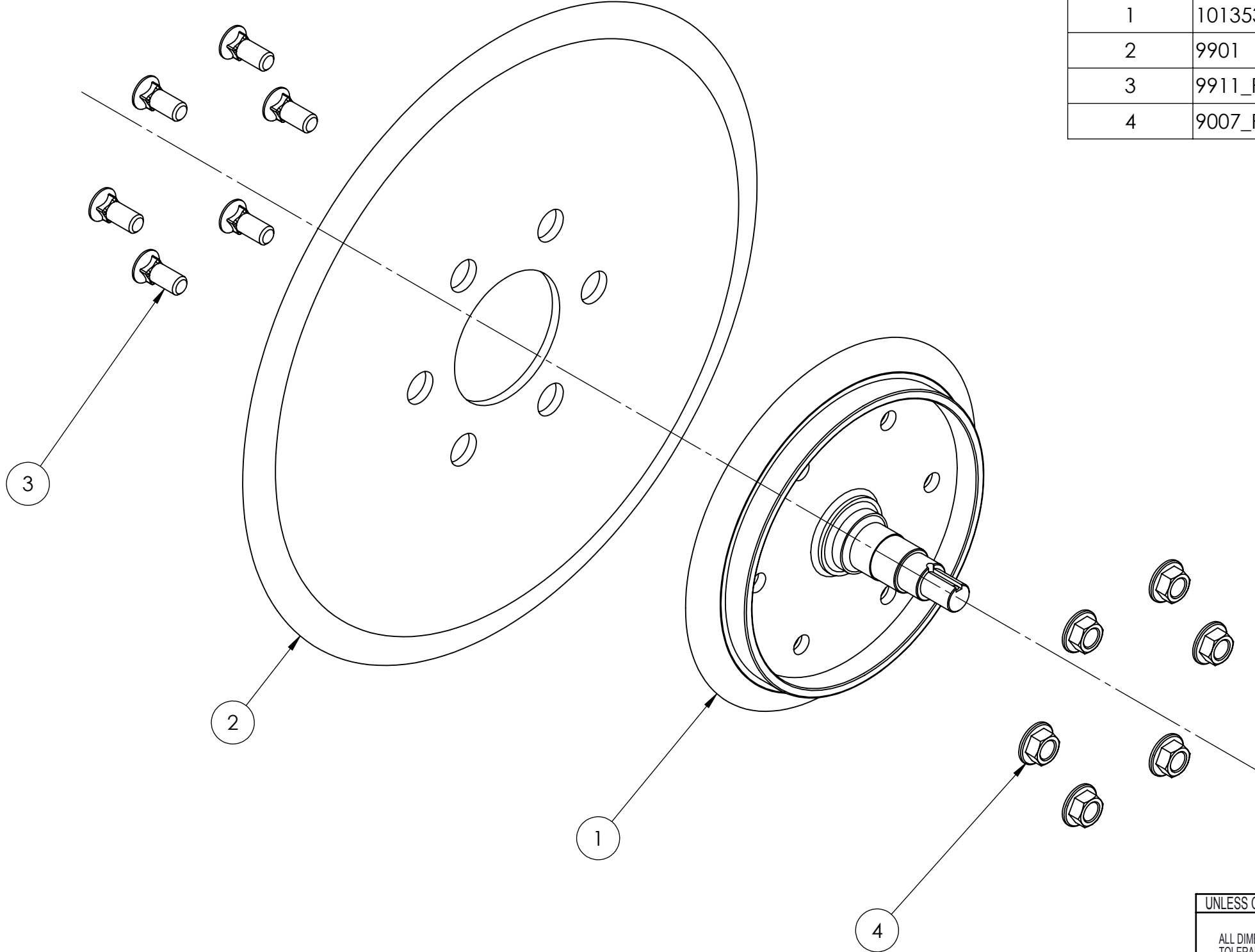
REVISIONS				
REV	DESCRIPTION	ECO	REVISION BY	REVISION DATE
JDB				

ITEM NO.	PART NUMBER	DESCRIPTION	QTY.
1	101578R2	MNT CAST 3004 MAIN BRK RH	1
2	9015	BEARING CUP	1
3	9539	BEARING CUP	1
4	9909_r2	SEAL RING, FOR 1.25"	1

UNLESS OTHERWISE SPECIFIED:  ALL DIMENSIONS ARE IN INCHES TOLERANCES: ONE PLACE DECIMAL= ±.06 TWO PLACE DECIMAL= ±.03 THREE PLACE DECIMAL= ±.015	DRAWN BY:	DATE:	<b>DAWN</b> EQUIPMENT COMPANY BOX 497 SYCAMORE, ILLINOIS 60178 USA
	CHECKED:	DATE:	
PLEASE NOTE:  THIS DRAWING IS THE PROPERTY OF THE DAWN EQUIPMENT COMPANY AND IS NOT TO BE USED FOR ANY PURPOSE DETRIMENTAL TO ITS INTEREST. ALL DESIGN RIGHTS ARE RESERVED.	APPROVED:	DATE:	DWG. NO. 301320R2
	MATERIAL:		SCALE: 2:3

REVISIONS				
REV	DESCRIPTION	ECO	REVISION BY	REVISION DATE

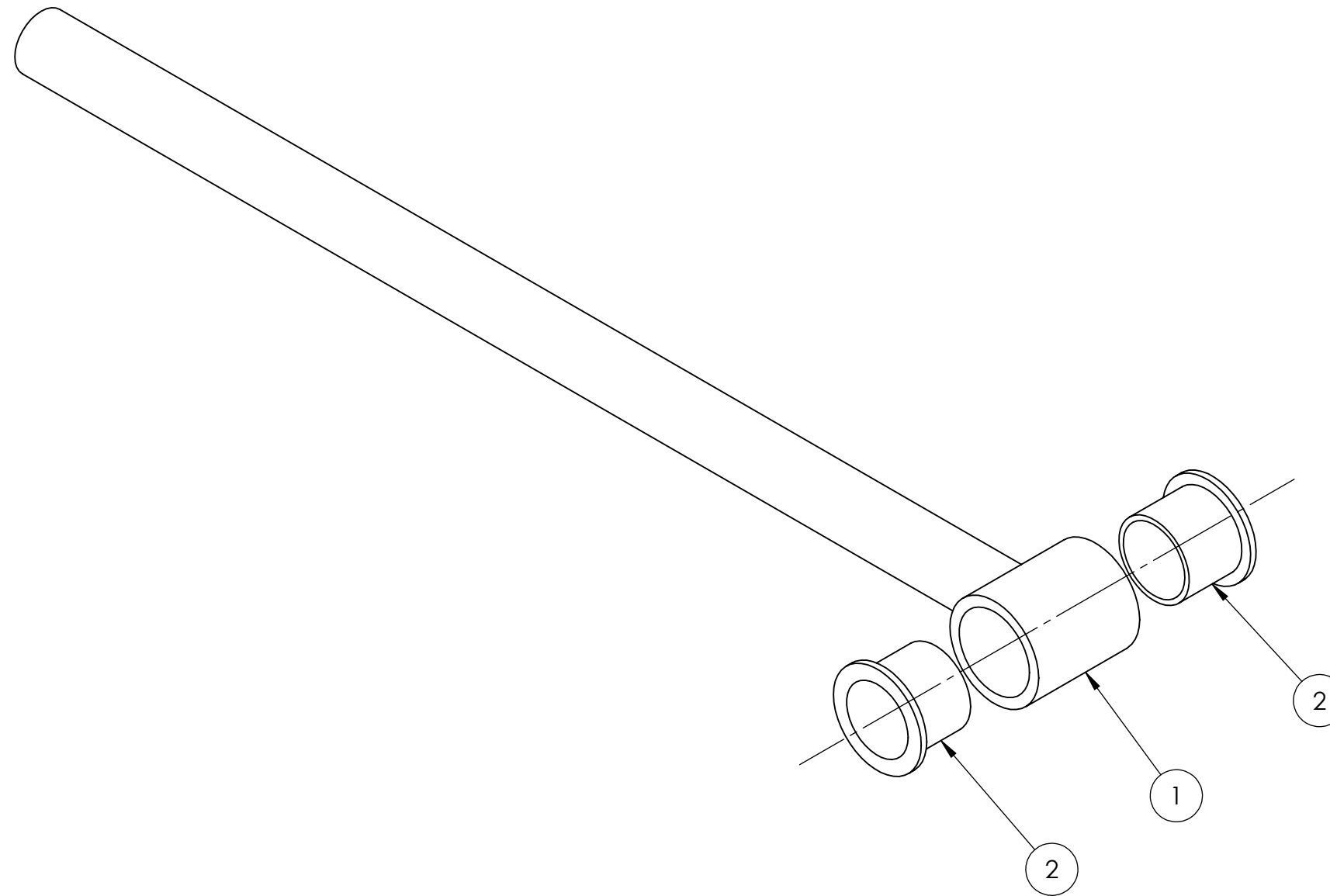
ITEM NO.	PART NUMBER	DESCRIPTION	QTY.
1	101353	SPINDLE,3000/4/5 MACHINED	1
2	9901	BLADE, FLAT, 18" DIAMETER	1
3	9911_R1	PLOWBLT 1/2-13X1-1/4GR5ZN	6
4	9007_R1	NUT 1/2-13 FLG LCK GR5 ZN	6




UNLESS OTHERWISE SPECIFIED:  ALL DIMENSIONS ARE IN INCHES TOLERANCES: ONE PLACE DECIMAL= ±.06 TWO PLACE DECIMAL= ±.03 THREE PLACE DECIMAL= ±.015	DRAWN BY:	DATE:	<b>DAWN</b> EQUIPMENT COMPANY BOX 497 SYCAMORE, ILLINOIS 60178 USA
	CHECKED:	DATE:	
PLEASE NOTE:  THIS DRAWING IS THE PROPERTY OF THE DAWN EQUIPMENT COMPANY AND IS NOT TO BE USED FOR ANY PURPOSE DETRIMENTAL TO ITS INTEREST. ALL DESIGN RIGHTS ARE RESERVED.	APPROVED:	DATE:	DWG. NO. 301317
	MATERIAL: Material <not specified>	SCALE: 1:3	WEIGHT: 3.603

REVISIONS				
REV	DESCRIPTION	ECO	REVISION BY	REVISION DATE
JDB				

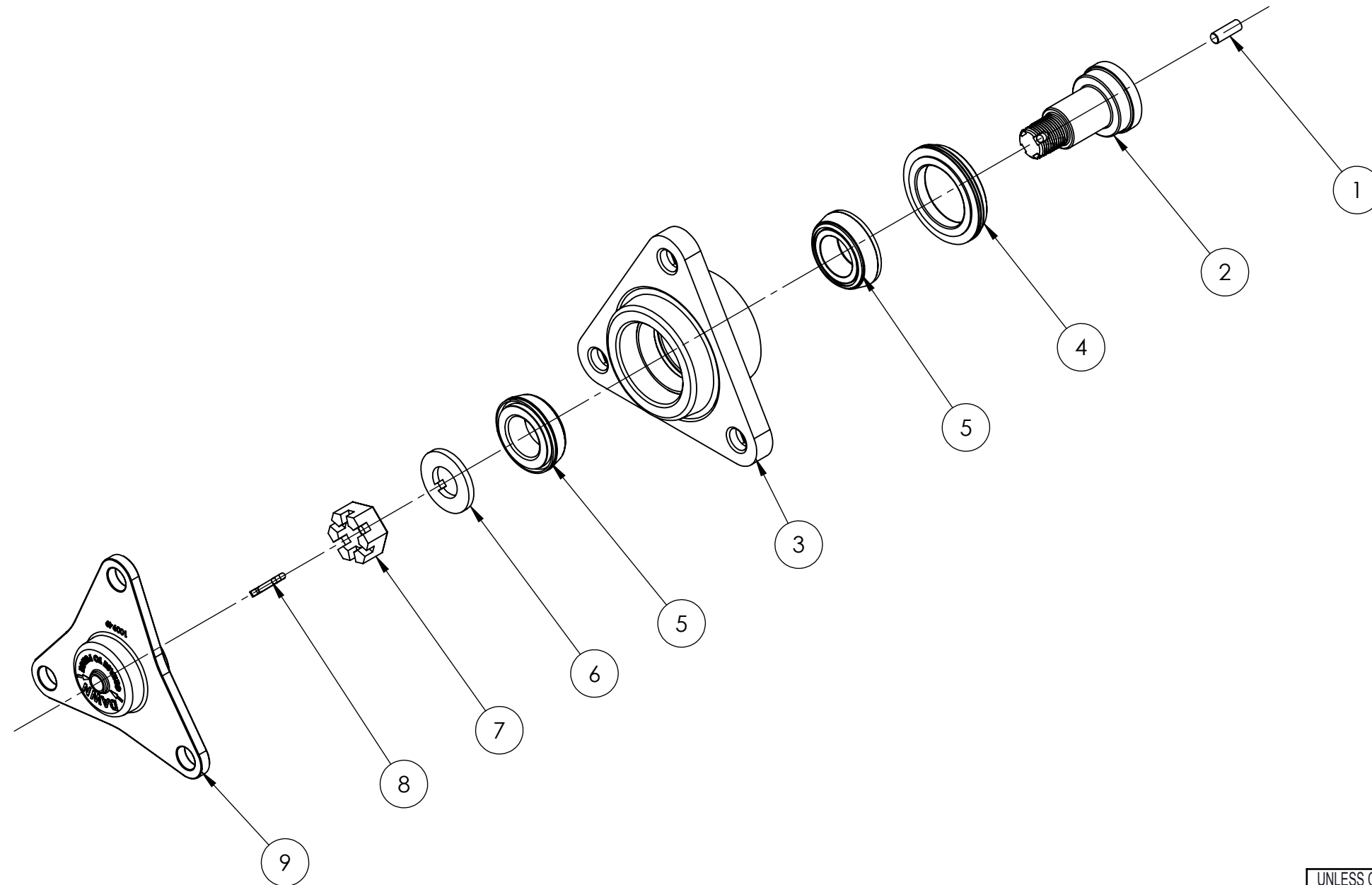
ITEM NO.	PART NUMBER	DESCRIPTION	QTY.
1	200474	ROD WELDT-FC MAIN SPRING	1
2	9902-3	BUSHING, FLNG 7/8 X 1 3/4	2



UNLESS OTHERWISE SPECIFIED:  ALL DIMENSIONS ARE IN INCHES TOLERANCES: ONE PLACE DECIMAL= ±.06 TWO PLACE DECIMAL= ±.03 THREE PLACE DECIMAL= ±.015	DRAWN BY:	DATE:	 DAWN <sup>®</sup> EQUIPMENT COMPANY BOX 497 SYCAMORE, ILLINOIS 60178 USA
	CHECKED:	DATE:	
PLEASE NOTE:  THIS DRAWING IS THE PROPERTY OF THE DAWN EQUIPMENT COMPANY AND IS NOT TO BE USED FOR ANY PURPOSE DETRIMENTAL TO ITS INTEREST. ALL DESIGN RIGHTS ARE RESERVED.	APPROVED:	DATE:	DWG. NO. 300267
	MATERIAL:		SCALE: 2:3      WEIGHT:

REVISIONS				
REV	DESCRIPTION	ECO	REVISION BY	REVISION DATE

ITEM NO.	PART NUMBER	DESCRIPTION	Trashwheel Spacing/ QTY.
1	9803	Groove Pin	1
2	100066	SHAFT, STANDARD HUB	1
3	300041	Hub Press Assembly	1
4	9017	SEAL, TRIPLE LIP, 1.5 DIA	1
5	9016	1" TAPERED ROLLER BEARING	2
6	9028	WASHER, 3/4 TONGUE	1
7	9024	NUT, 3/4-16 CASTLE	1
8	9019	PIN, COTTER 5/32X1"	1
9	100949	Supercap - Greasecap	1

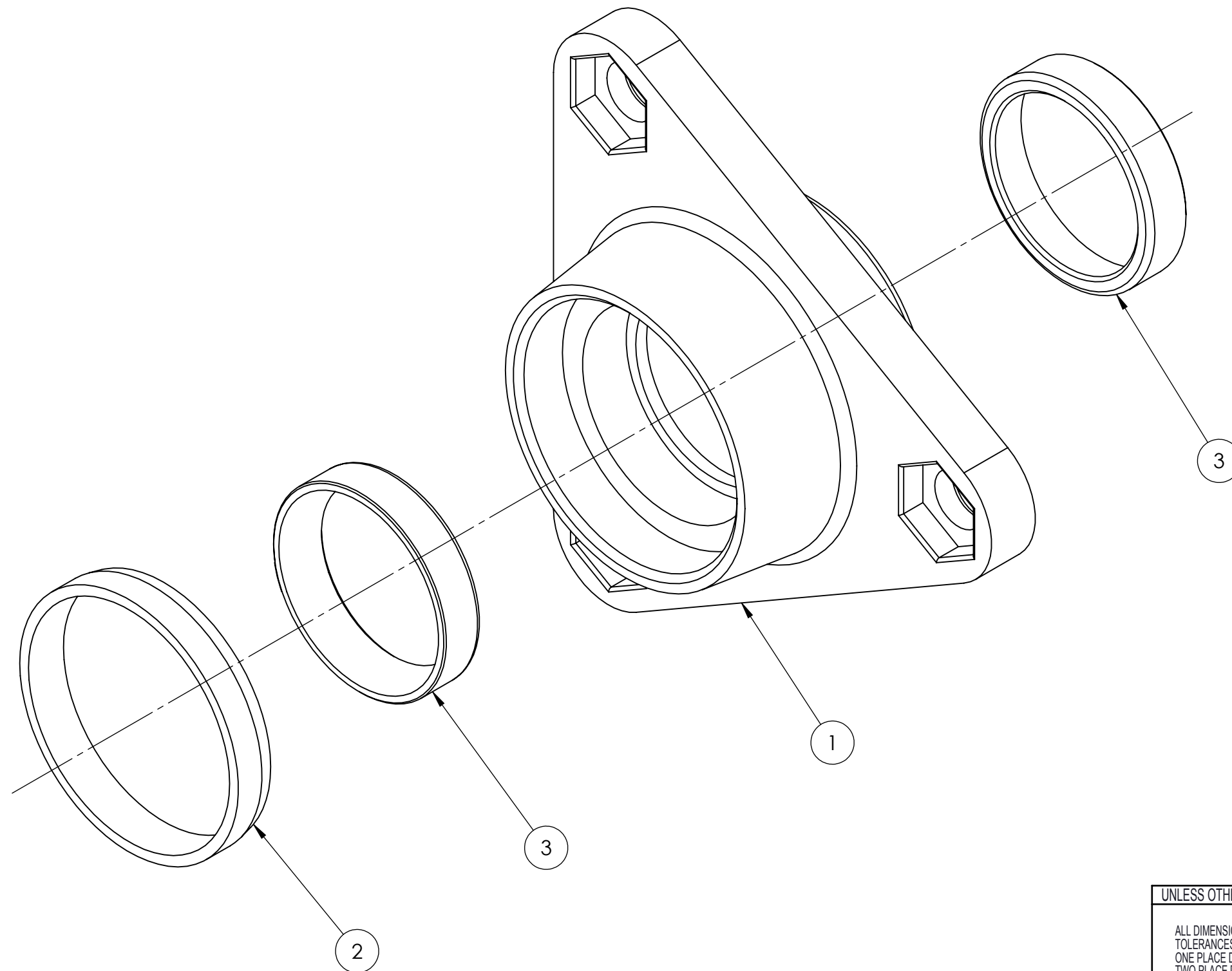


UNLESS OTHERWISE SPECIFIED:  ALL DIMENSIONS ARE IN INCHES TOLERANCES: ONE PLACE DECIMAL= ±.06 TWO PLACE DECIMAL= ±.03 THREE PLACE DECIMAL= ±.015	DRAWN BY:	DATE:	<b>DAWN</b> EQUIPMENT COMPANY BOX 497 SYCAMORE, ILLINOIS 60178 USA
	CHECKED:	DATE:	
PLEASE NOTE:  THIS DRAWING IS THE PROPERTY OF THE DAWN EQUIPMENT COMPANY AND IS NOT TO BE USED FOR ANY PURPOSE DETRIMENTAL TO ITS INTEREST. ALL DESIGN RIGHTS ARE RESERVED.	APPROVED:	DATE:	DWG. NO. 400014-R1
	MATERIAL:		SCALE: 1:3

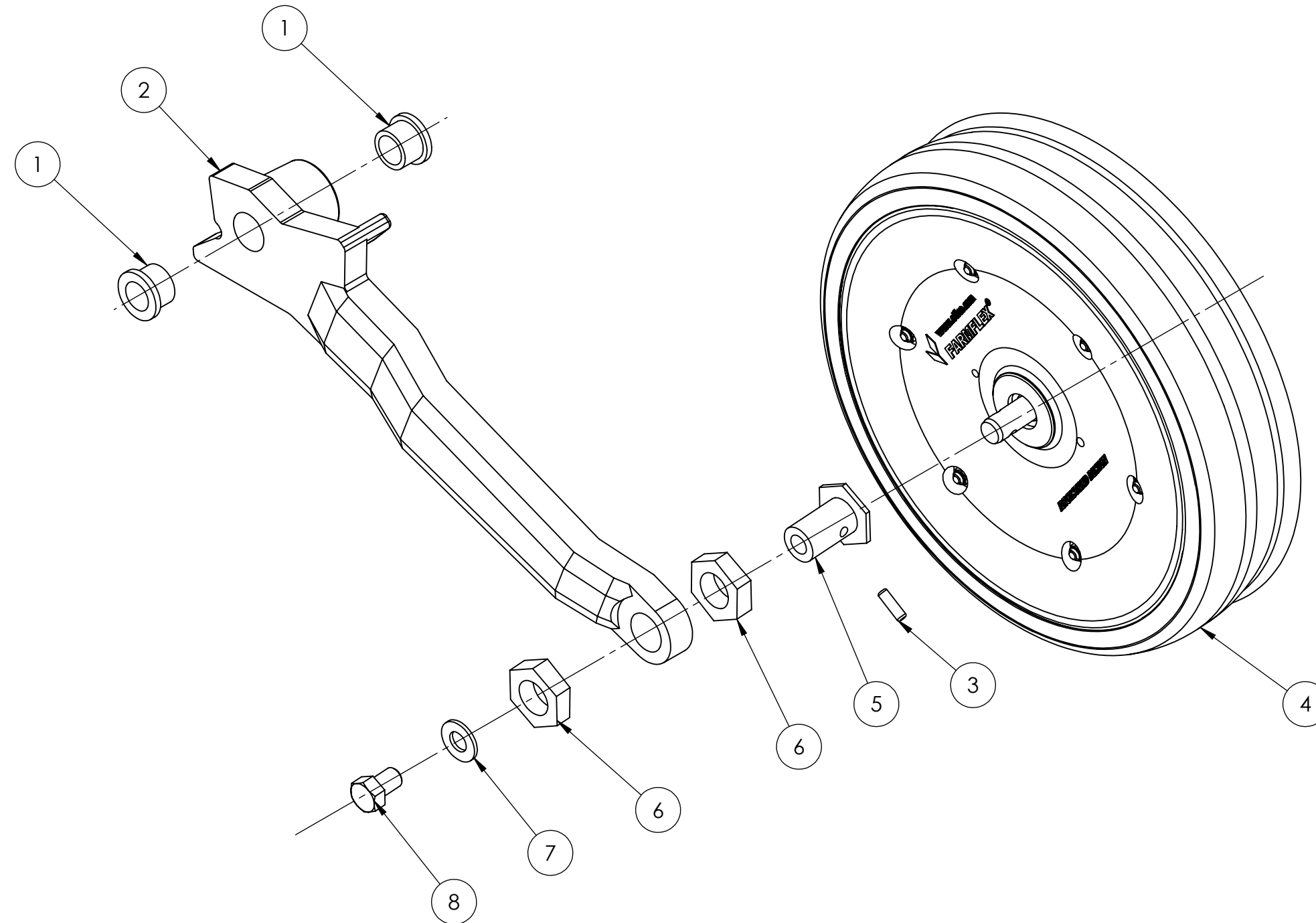


REVISIONS				
REV	DESCRIPTION	ECO	REVISION BY	REVISION DATE
02				

ITEM NO.	PART NUMBER	DESCRIPTION	QTY.
1	200075	HUB MACHINED FORGING	1
2	9018	SEAL, RING, PHENOLIC	1
3	9015	BEARING CUP	2




UNLESS OTHERWISE SPECIFIED:  ALL DIMENSIONS ARE IN INCHES TOLERANCES: ONE PLACE DECIMAL= ±.06 TWO PLACE DECIMAL= ±.03 THREE PLACE DECIMAL= ±.015	DRAWN BY:	DATE:	<b>DAWN</b> EQUIPMENT COMPANY BOX 497 SYCAMORE, ILLINOIS 60178 USA
	CHECKED:	DATE:	
PLEASE NOTE:  THIS DRAWING IS THE PROPERTY OF THE DAWN EQUIPMENT COMPANY AND IS NOT TO BE USED FOR ANY PURPOSE DETRIMENTAL TO ITS INTEREST. ALL DESIGN RIGHTS ARE RESERVED.	APPROVED:	DATE:	DWG. NO. 300041
	MATERIAL:		SCALE: 1:1
			WEIGHT:



REVISIONS				
REV	DESCRIPTION	ECO	REVISION BY	REVISION DATE
JDB				

ITEM NO.	PART NUMBER	DESCRIPTION	With angle adjuster/QTY.
1	9902-2	BUSHING FLNG 3/4X 1 X 3/4	2
2	101355r2	ARM, RH, MACHINED	1
3	90183	PIN, SPIROL 1/4 X 13/16 HD	1
4	9988_R2	WHEEL, 330MM X 75MM 3004/5	1
5	102181	BUSHING, 3004 TIRE ECCENTRIC	1
6	102182	HEX, 3004 TIRE ECCENTRIC	2
7	9003	FW, 1/2 ZINC YELLOW	1
8	90051	HHCS 1/2-13 X 3/4 GR5 ZN	1

SHOWN: 300266-R01 FOR RH  
300265-R01 FOR LH

UNLESS OTHERWISE SPECIFIED:  ALL DIMENSIONS ARE IN INCHES TOLERANCES: ONE PLACE DECIMAL= ±.06 TWO PLACE DECIMAL= ±.03 THREE PLACE DECIMAL= ±.015	DRAWN BY:	DATE:	 DAWN EQUIPMENT COMPANY BOX 497 SYCAMORE, ILLINOIS 60178 USA
	CHECKED:	DATE:	
PLEASE NOTE:  THIS DRAWING IS THE PROPERTY OF THE DAWN EQUIPMENT COMPANY AND IS NOT TO BE USED FOR ANY PURPOSE DETRIMENTAL TO ITS INTEREST. ALL DESIGN RIGHTS ARE RESERVED.	APPROVED:	DATE:	DWG. NO. 300266R-01
	MATERIAL:		SCALE: 1:3