
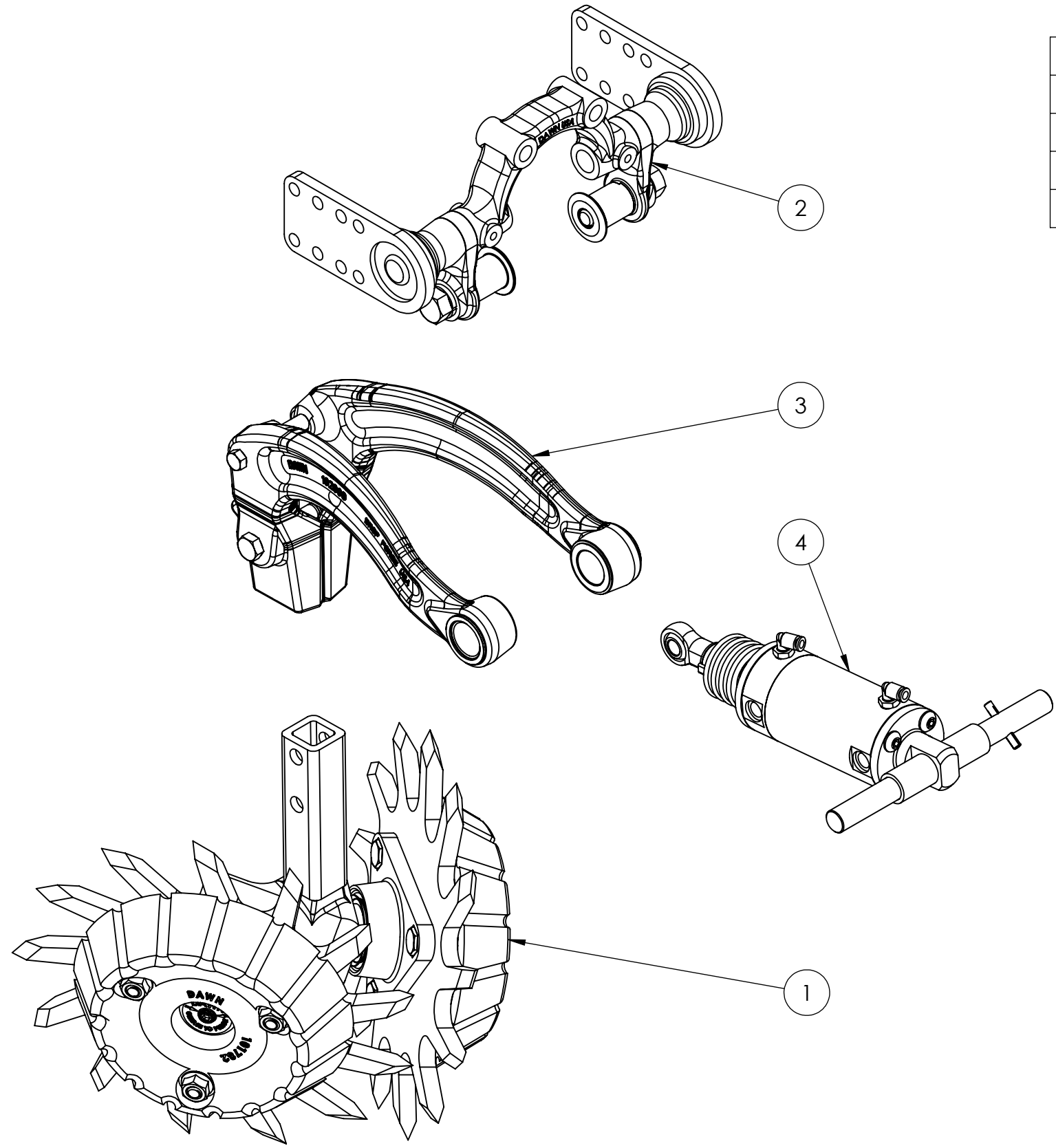




REVISIONS				
REV	DESCRIPTION	ECO	REVISION BY	REVISION DATE

UNLESS OTHERWISE SPECIFIED: ALL DIMENSIONS ARE IN INCHES TOLERANCES: ONE PLACE DECIMAL= ±.06 TWO PLACE DECIMAL= ±.03 THREE PLACE DECIMAL= ±.015	DRAWN BY:	DATE:	 DAWN EQUIPMENT COMPANY BOX 497 SYCAMORE, ILLINOIS 60178 USA	
	CHECKED:	DATE:	TITLE:	
PLEASE NOTE:	APPROVED:	DATE:	DWG. NO.	
THIS DRAWING IS THE PROPERTY OF THE DAWN EQUIPMENT COMPANY AND IS NOT TO BE USED FOR ANY PURPOSE DETRIMENTAL TO ITS INTEREST. ALL DESIGN RIGHTS ARE RESERVED.	MATERIAL: Material <not specified>		SCALE: 1:3	WEIGHT: 62.886



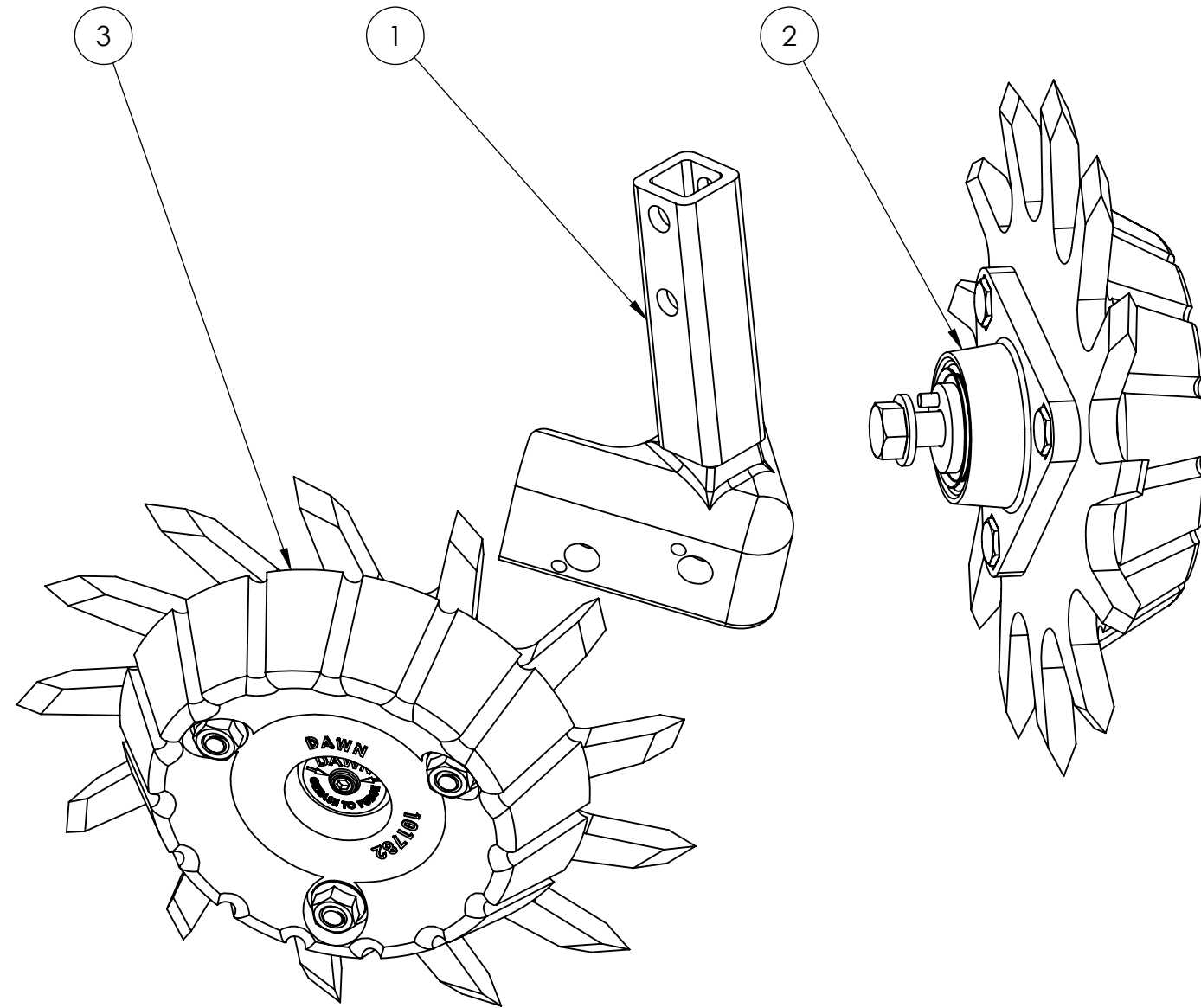
REVISIONS				
REV	DESCRIPTION	ECO	REVISION BY	REVISION DATE

ITEM NO.	PART NUMBER	DESCRIPTION	QTY.
1	1130A-12.75-GFX-DB	Offset_Left	1
2	300530	Yoke Assembly	1
3	300531	Pivoting Arms	1
4	300533	CYL, GFX-P KIT	1

UNLESS OTHERWISE SPECIFIED: ALL DIMENSIONS ARE IN INCHES TOLERANCES: ONE PLACE DECIMAL= ±.06 TWO PLACE DECIMAL= ±.03 THREE PLACE DECIMAL= ±.015	DRAWN BY:	DATE:	DAWN EQUIPMENT COMPANY BOX 497 SYCAMORE, ILLINOIS 60178 USA	
	CHECKED:	DATE:	TITLE: 5009-DB-12.75-EXPLODED	
PLEASE NOTE: THIS DRAWING IS THE PROPERTY OF THE DAWN EQUIPMENT COMPANY AND IS NOT TO BE USED FOR ANY PURPOSE DETRIMENTAL TO ITS INTEREST. ALL DESIGN RIGHTS ARE RESERVED.	APPROVED:	DATE:	DWG. NO. 5009-DB-12.75-P-EXPLODED	
	MATERIAL: Material <not specified>		SCALE: 1:4	WEIGHT: 62.886

REVISIONS				
REV	DESCRIPTION	ECO	REVISION BY	REVISION DATE
-				

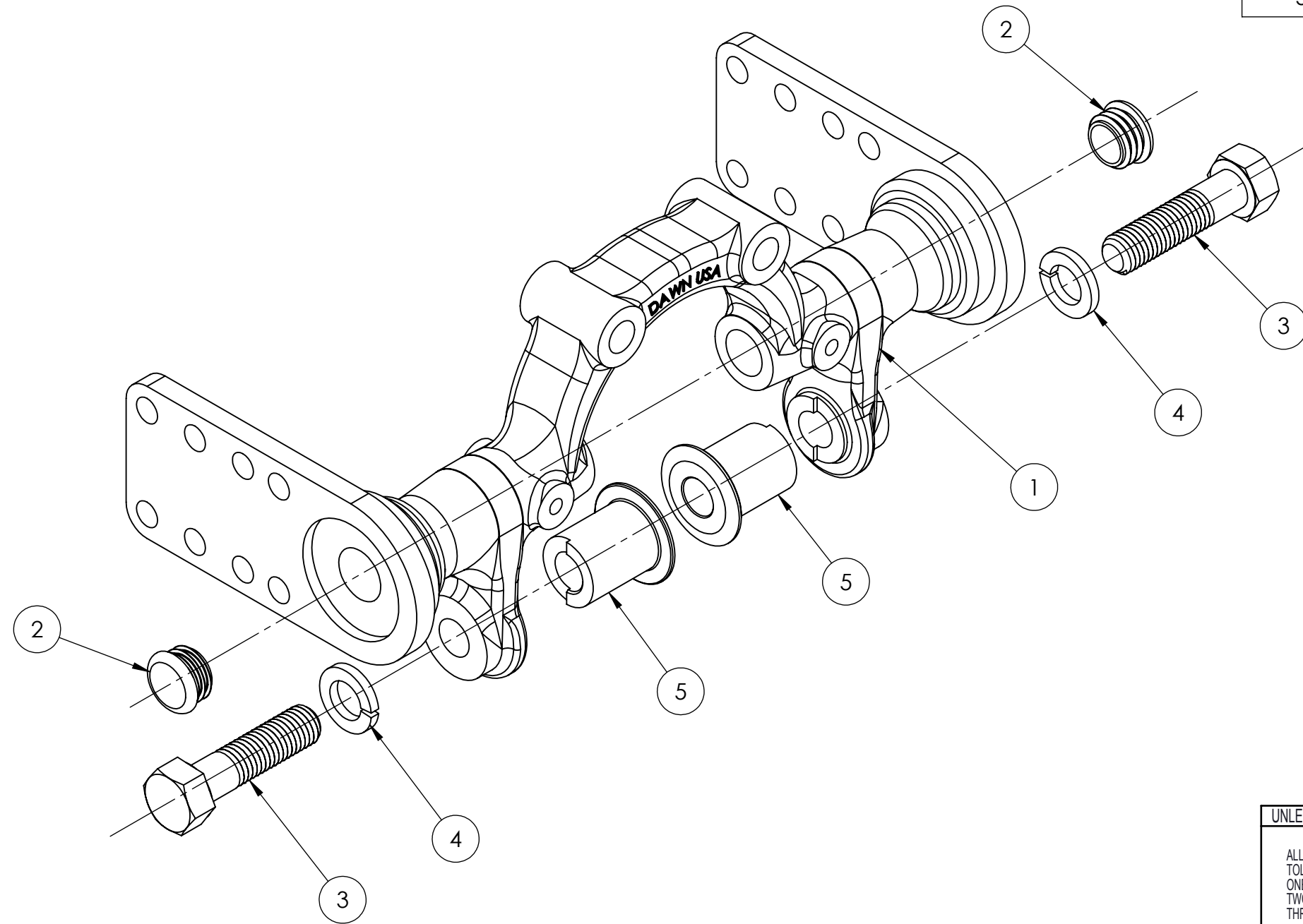
ITEM NO.	PART NUMBER	DESCRIPTION	Offset_Left /QTY.
1	200879	Stem Weldment	1
2	300297L	RH Trashwheel	1
3	300297R	RH Trashwheel	1




UNLESS OTHERWISE SPECIFIED: ALL DIMENSIONS ARE IN INCHES TOLERANCES: ONE PLACE DECIMAL= ±.06 TWO PLACE DECIMAL= ±.03 THREE PLACE DECIMAL= ±.015	DRAWN BY:	DATE:	DAWN EQUIPMENT COMPANY BOX 497 SYCAMORE, ILLINOIS 60178 USA	
	CHECKED:	DATE:	TITLE: Trashwheels	
PLEASE NOTE: THIS DRAWING IS THE PROPERTY OF THE DAWN EQUIPMENT COMPANY AND IS NOT TO BE USED FOR ANY PURPOSE DETRIMENTAL TO ITS INTEREST. ALL DESIGN RIGHTS ARE RESERVED.	APPROVED:	DATE:	DWG. NO. 1130A-12.75-GFX-DB-EXPLODED	
	MATERIAL:		SCALE: 1:3	WEIGHT:

REVISIONS				
REV	DESCRIPTION	ECO	REVISION BY	REVISION DATE
-				

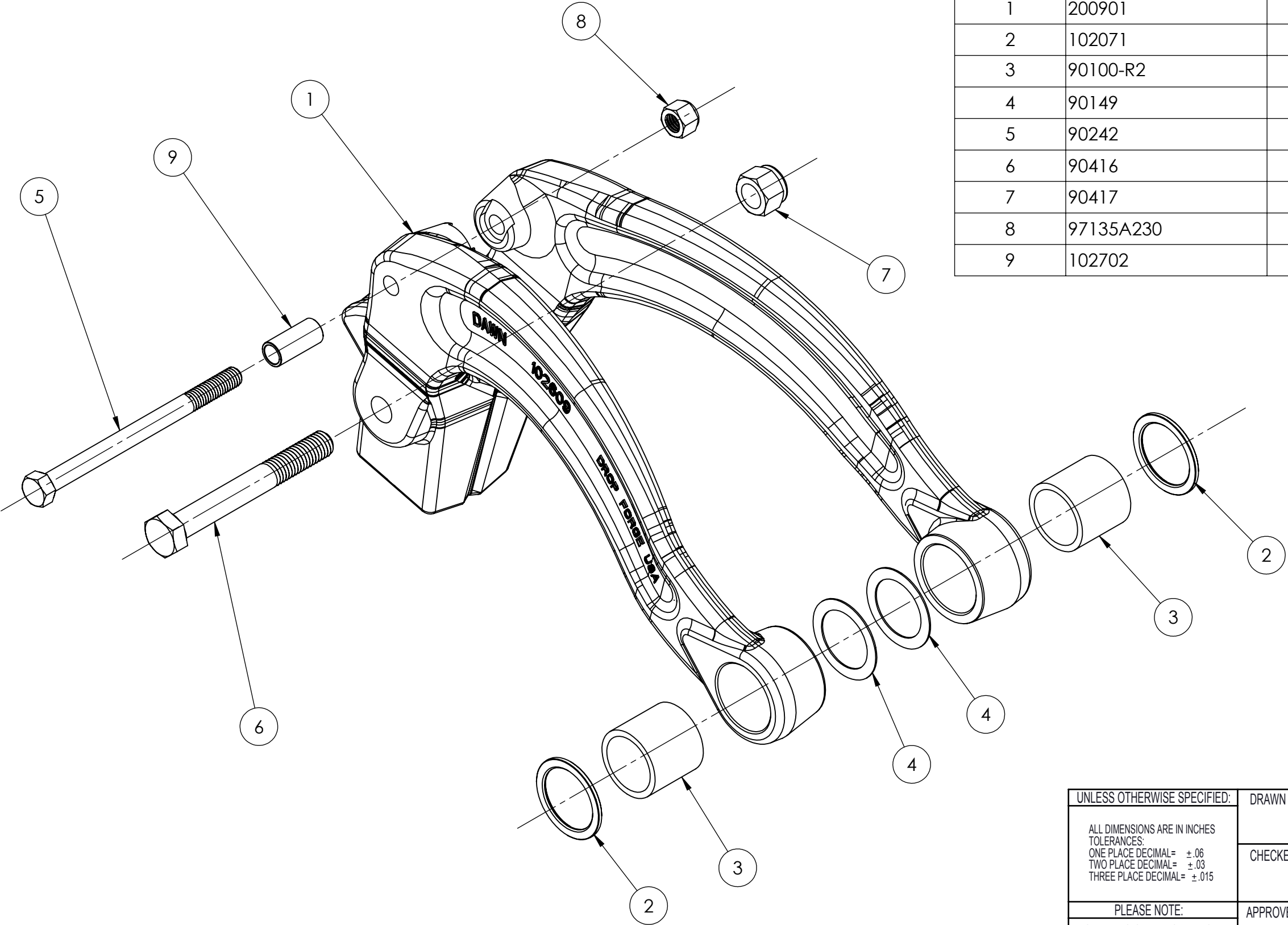
ITEM NO.	PART NUMBER	DESCRIPTION	QTY.
1	200959	Yoke Weldment	1
2	90306	PLUG, 7/8, GFX, STUD END	2
3	9871	HHCS 5/8-11 X 2.5 GR 8	2
4	9069	5/8 Lock Washer	2
5	102064-R2	GFX MAIN PIVOT	2



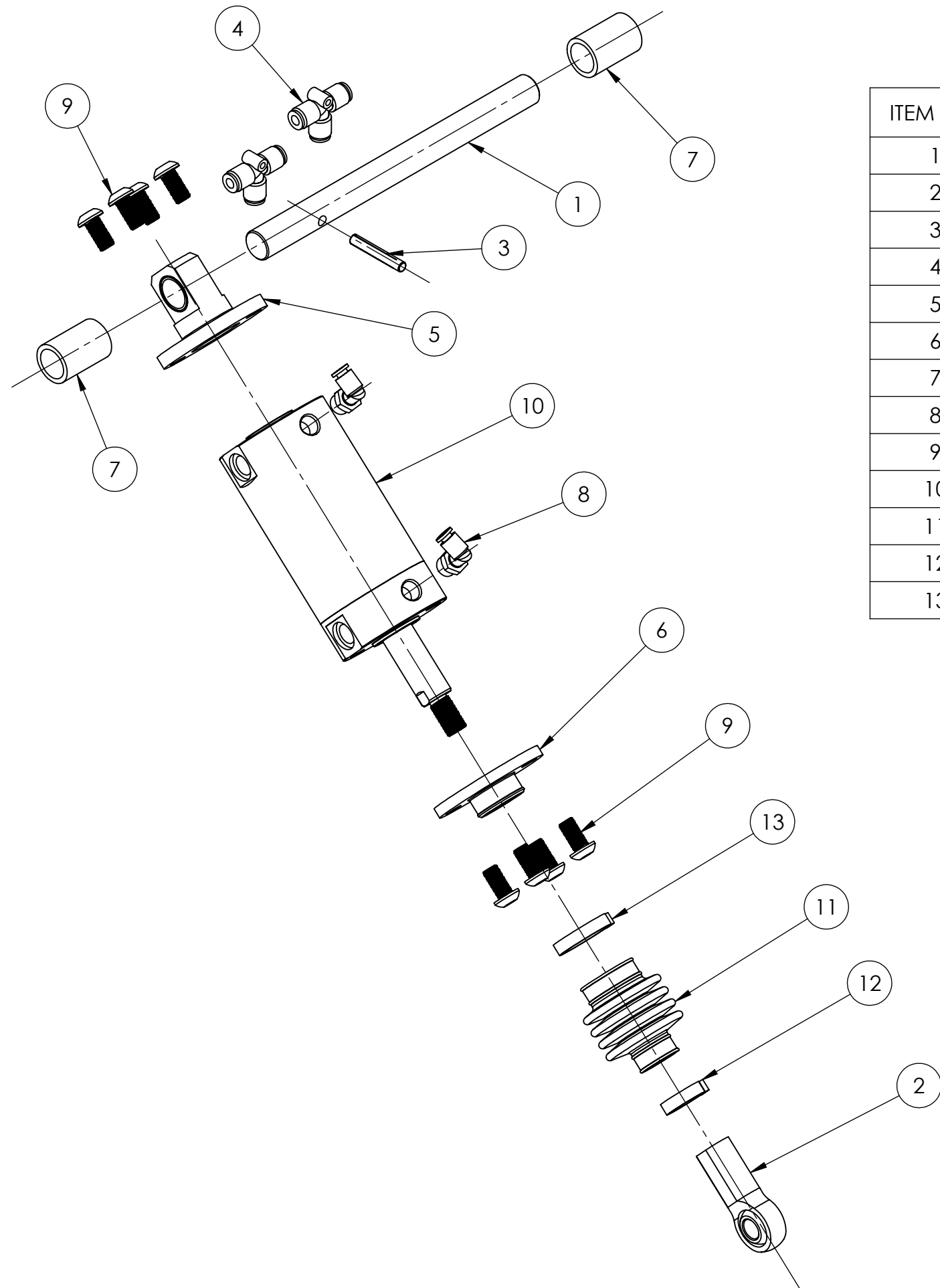
UNLESS OTHERWISE SPECIFIED: ALL DIMENSIONS ARE IN INCHES TOLERANCES: ONE PLACE DECIMAL= ±.06 TWO PLACE DECIMAL= ±.03 THREE PLACE DECIMAL= ±.015	DRAWN BY:	DATE:	 BOX 497 SYCAMORE, ILLINOIS 60178 USA
	CHECKED:	DATE:	
PLEASE NOTE: THIS DRAWING IS THE PROPERTY OF THE DAWN EQUIPMENT COMPANY AND IS NOT TO BE USED FOR ANY PURPOSE DETRIMENTAL TO ITS INTEREST. ALL DESIGN RIGHTS ARE RESERVED.	APPROVED:	DATE:	DWG. NO. 300530-EXPLODED
	MATERIAL:		SCALE: 1:2

REVISIONS				
REV	DESCRIPTION	ECO	REVISION BY	REVISION DATE

ITEM NO.	PART NUMBER	DESCRIPTION	QTY.
1	200901	Arm Weldment	1
2	102071	Plastic Thrust Wahser	2
3	90100-R2	Bushing	2
4	90149	Plastic Thrust Washer	2
5	90242	HHCS 3/8-16 X 5 GR8 ZINC	1
6	90416	1/2-13 X 4" GR8 HHCS	1
7	90417	1/2-13 CRIMP LOCK NUT	1
8	97135A230	3/8"-16 ALL METAL LOCKNUT	1
9	102702	SPACER, GFX PNEUMATIC BUS	1



UNLESS OTHERWISE SPECIFIED: ALL DIMENSIONS ARE IN INCHES TOLERANCES: ONE PLACE DECIMAL= ±.06 TWO PLACE DECIMAL= ±.03 THREE PLACE DECIMAL= ±.015	DRAWN BY:	DATE:	DAWN EQUIPMENT COMPANY BOX 497 SYCAMORE, ILLINOIS 60178 USA
	CHECKED:	DATE:	
PLEASE NOTE: THIS DRAWING IS THE PROPERTY OF THE DAWN EQUIPMENT COMPANY AND IS NOT TO BE USED FOR ANY PURPOSE DETRIMENTAL TO ITS INTEREST. ALL DESIGN RIGHTS ARE RESERVED.	APPROVED:	DATE:	DWG. NO. 300531-EXPLODED
	MATERIAL:		SCALE: 1:2



REVISIONS				
REV	DESCRIPTION	ECO	REVISION BY	REVISION DATE

ITEM NO.	PART NUMBER	DESCRIPTION	OPERATING POSITION/QTY.
1	102709	STUD, GFX-P CYL PVT MNT	1
2	90493	ROD END, PNEUMATIC CYL	1
3	90289	PIN, GROOVED, 1/4 X 1 5/8	1
4	90388	Push to Connect T	2
5	300534	GFX-P MNT PRESS ASSY	1
6	102723	PLT, GFX-P CYL BELLOW MNT	1
7	102724	SPACER, GFX-P CYL CENTER	2
8	90640	ADAPTER, MALE ELBOW, UNIF	2
9	90641	BHSCS, 3/8-24 X 3/4, SS	8
10	90633	CYLINDER, PNEUMATIC GFXP	1
11	90639-2	BELLOWS, GFX-P OPERATING	1
12	90683	CLAMP, HOSE, 15/16-1 1/16	1
13	90684	CLAMP,HOSE1 15/64-1 23/64	1

UNLESS OTHERWISE SPECIFIED: ALL DIMENSIONS ARE IN INCHES TOLERANCES: ONE PLACE DECIMAL= ±.06 TWO PLACE DECIMAL= ±.03 THREE PLACE DECIMAL= ±.015	DRAWN BY:	DATE:	DAWN EQUIPMENT COMPANY BOX 497 SYCAMORE, ILLINOIS 60178 USA
	CHECKED:	DATE:	
PLEASE NOTE: THIS DRAWING IS THE PROPERTY OF THE DAWN EQUIPMENT COMPANY AND IS NOT TO BE USED FOR ANY PURPOSE DETRIMENTAL TO ITS INTEREST. ALL DESIGN RIGHTS ARE RESERVED.	APPROVED:	DATE:	DWG. NO. 300533-EXPLODED
	MATERIAL: Material <not specified>		SCALE: 1:3