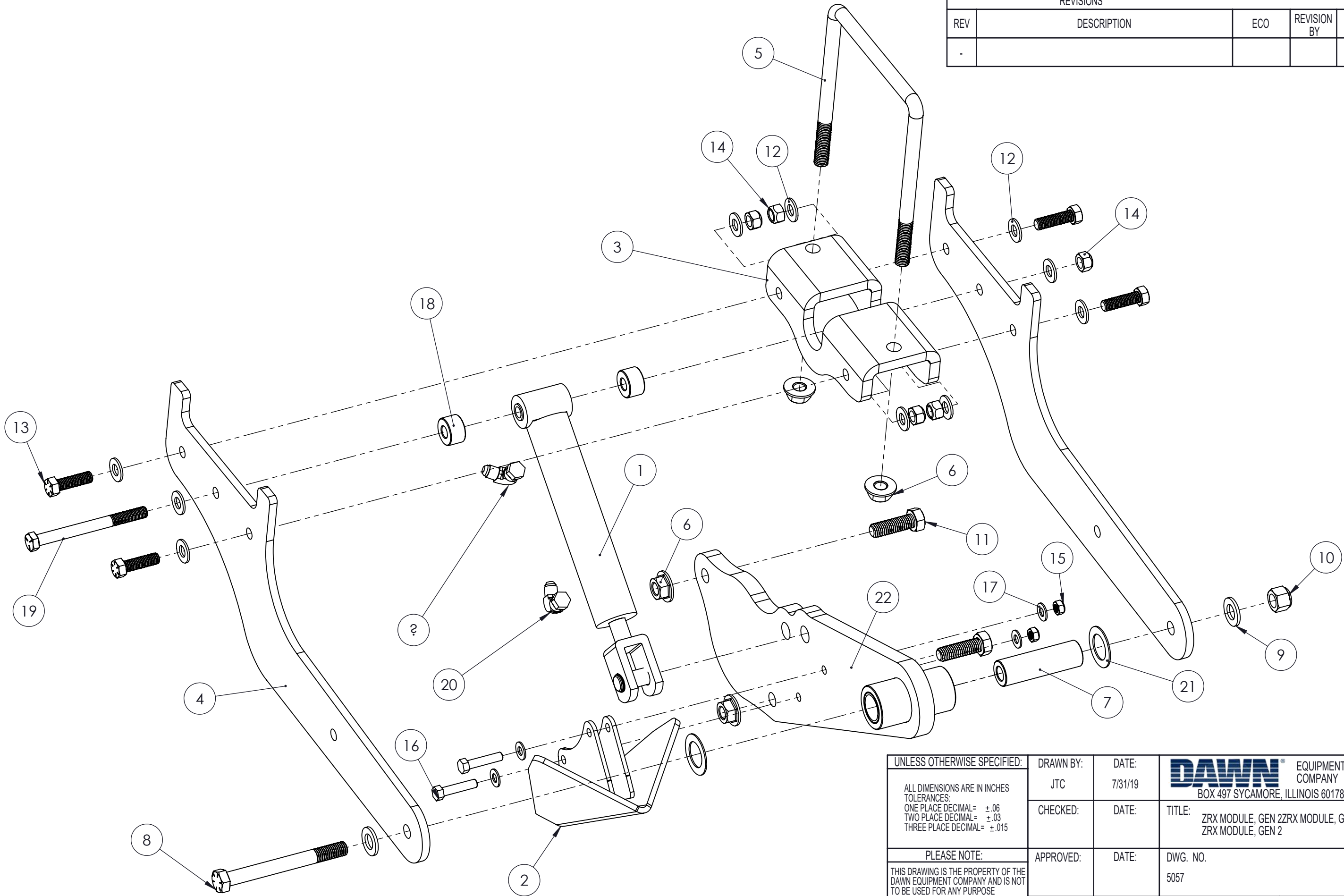


| REVISIONS | | | | |
|-----------|-------------|-----|-------------|---------------|
| REV | DESCRIPTION | ECO | REVISION BY | REVISION DATE |
| - | | | | |



UNLESS OTHERWISE SPECIFIED:

ALL DIMENSIONS ARE IN INCHES
 TOLERANCES:
 ONE PLACE DECIMAL= ±.06
 TWO PLACE DECIMAL= ±.03
 THREE PLACE DECIMAL= ±.015

PLEASE NOTE:

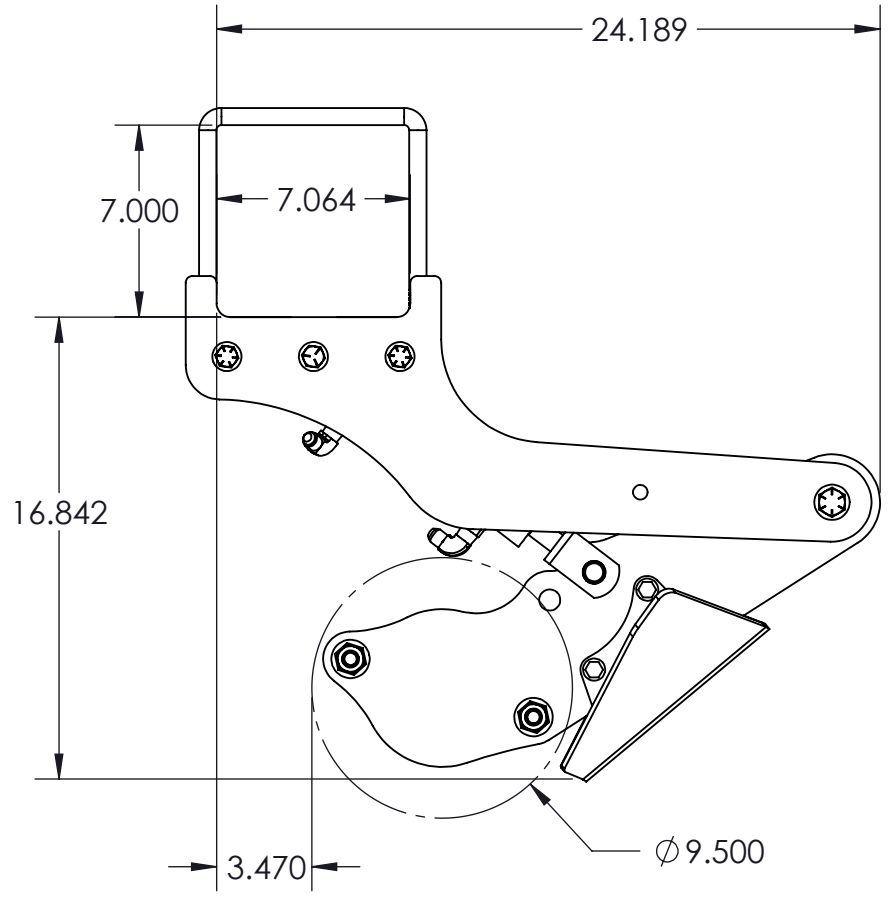
THIS DRAWING IS THE PROPERTY OF THE
 DAWN EQUIPMENT COMPANY AND IS NOT
 TO BE USED FOR ANY PURPOSE
 DETRIMENTAL TO ITS INTEREST. ALL
 DESIGN RIGHTS ARE RESERVED.

| | |
|------------------------------------|------------------|
| DRAWN BY: JTC | DATE: 7/31/19 |
| CHECKED: | DATE: |
| APPROVED: | DATE: |
| MATERIAL: Material <not specified> | |

| | |
|--|--|
| DAWN EQUIPMENT COMPANY BOX 497 SYCAMORE, ILLINOIS 60178 USA | TITLE: ZRX MODULE, GEN 2 ZRX MODULE, GEN 2 |
| | DWG. NO. 5057 |
| SCALE: 1:4 | WEIGHT: 61.044 |

| ITEM NO. | PART NUMBER | DESCRIPTION | |
|----------|-------------|---------------------------|----|
| 1 | 300555 | CYLINDER ASSEMBLY ZRX | 1 |
| 2 | 201250 | WELDMENT, ZRX SHIELD ASSY | 1 |
| 3 | 103359 | MOUNT, ZRX GEN 2 | 1 |
| 4 | 103358 | PLATE, ZRX GEN 2 | 2 |
| 5 | 9188 | 5/8-11 U-Bolt | 1 |
| 6 | 9939 | NUT 5/8-11 FLG LOCK GR8 | 4 |
| 7 | 103730 | BUSHING, ZRX ARM PIVOT | 1 |
| 8 | 9289 | HFBOLT 0.625-11x6x1.5-N | 1 |
| 9 | 9032 | FLAT WASHER 5/8 | 2 |
| 10 | 9142 | 5/8-11 ALL METAL LOCK NUT | 1 |
| 11 | 9078 | HHCS 5/8-11 X 2 GR8 ZN | 2 |
| 12 | 9003 | FW, 1/2 ZINC YELLOW | 10 |
| 13 | 9088 | HHCS, 1/2-13 X 1.75 GR 8 | 4 |
| 14 | 90417 | 1/2-13 CRIMP LOCK NUT | 5 |
| 15 | 90495 | 3/8"-16 ALL METAL LOCKNUT | 2 |
| 16 | 91068 | HHCS, 3/8-16 X 1.75 | 2 |
| 17 | 90045 | FW, 3/8 ZINC | 4 |
| 18 | 103729 | SPACER, ZRX LIFT CYLINDER | 2 |
| 19 | 90459 | HHCS 1/2-13 X 5.5 GR8 | 1 |
| 20 | 90718 | ADAPTER, -6 JIC SW ELBOW | 2 |
| 21 | 102336 | Thrust Washer | 2 |
| 22 | 301375 | PRESS ASSY, ZRX PIVOT ARM | 1 |

| REVISIONS | | | | |
|-----------|-------------|-----|-------------|---------------|
| REV | DESCRIPTION | ECO | REVISION BY | REVISION DATE |
| - | | | | |



| | | | |
|---|------------------|------------------|---|
| UNLESS OTHERWISE SPECIFIED: ALL DIMENSIONS ARE IN INCHES TOLERANCES: ONE PLACE DECIMAL= ±.06 TWO PLACE DECIMAL= ±.03 THREE PLACE DECIMAL= ±.015 | DRAWN BY: JTC | DATE: 7/31/19 | DAWN ® EQUIPMENT COMPANY BOX 497 SYCAMORE, ILLINOIS 60178 USA |
| | CHECKED: | DATE: | |
| PLEASE NOTE: THIS DRAWING IS THE PROPERTY OF THE DAWN EQUIPMENT COMPANY AND IS NOT TO BE USED FOR ANY PURPOSE DETRIMENTAL TO ITS INTEREST. ALL DESIGN RIGHTS ARE RESERVED. | APPROVED: | DATE: | DWG. NO. 5057 |
| MATERIAL: Material <not specified> | | SCALE: 1:7 | WEIGHT: 61.044 |